

Designation Decree: Prohibition from using a generator and/or main and/or auxiliary engine at De Ruijterkade West (berths at jetties 16, 17 and 18) and at Westerdoksdijk

Decree No. 2023/36

The Director of the Central Nautical Management North Sea Canal Area,

Having regard to:

- The Mandate Decree of the Mayor and Aldermen of Amsterdam, dated 3 December 2019, published in the *Gemeentebld* (Municipal Gazette) on 3 January 2020 under number 2020-7080, on the basis of which the Harbour Master of Amsterdam, on behalf of the Mayor and Aldermen, is authorised to adopt designation decrees as referred to in article 4.2 of the *Regionale Havenverordening Noordzeekanaalgebied 2019* (Regional Port Bye-laws for the North Sea Canal Area 2019);
- Article 4.2 of the Regional Port Bye-Laws for North Sea Canal Area 2019, which provides that the Mayor and Aldermen may designate areas where moored ships are prohibited from using a generator or a main or auxiliary engine on board their ship;

Whereas:

- Jetties 16, 17 and 18 at De Ruijterkade West and the berths at Westerdoksdijk are mainly used by river cruise ships;
- In the vicinity of the above locations as well as on the opposite side of the IJ, a large number of houses are located;
- River cruise ships use on-board generators as well as main and auxiliary engines for on-board power supply;
- The use of these generators and/or auxiliary and main engines may cause noise nuisance as well as deterioration of the air quality and thus a public nuisance and/or inconvenience to local residents;
- Nuisance and/or inconvenience does not occur if these ships can provide for their energy needs in another, emission-free way, such as through the use of a shore-based power facility;
- New shore-based power facilities (shore power cabinets) were installed at this location in 2023 in accordance with the latest technical quality requirements at the time of installation;
- Moored ships can use the installed shore-based power facility as an alternative means of energy provision;
- The purpose of the present Decree is to designate an area where moored ships are prohibited from using a generator or a main and/or auxiliary engine.

Has decreed the following:

- I. To designate the area located at De Ruijterkade West and Westerdoksdijk, as indicated on the map in Appendix 1 accompanying this Decree, as an area where ships are prohibited from using a generator or a main and/or auxiliary engine.
- II. In the area designated on the basis of the first paragraph, moored ships are prohibited from using a generator, main or auxiliary engine.
- III. Any malfunctions to the shore-based power facility should be reported immediately after mooring to the support service number stated on the facility as well as to *Meldpunt Haven* (Port Information Department) at +312 0523 4600 option 2).

- IV. An exemption from the prohibition referred to in the second paragraph applies to the ship reporting such a malfunction if, after the report and after consultation, the ship does not shift to an alternative berth for the duration of the malfunction;
- V. This Designation Decree will come into force on 01 August 2023.
- VI. Designation Decree 2017/010 "Prohibition to use a generator and/or main and/or auxiliary engine at Westerdoksdijk", published on 17 March 2017, will be cancelled.

Appendix 1: Map of Westerdoksdijk and De Ruijterkade West indicating the area covered by this designation.

Appendix 2: Explanatory notes to this Decree

Date: 14 July 2023

The Mayor and Aldermen of Amsterdam, on their behalf, the Director of the Central Nautical Management North Sea Canal Area



J.H.M. Mateyo

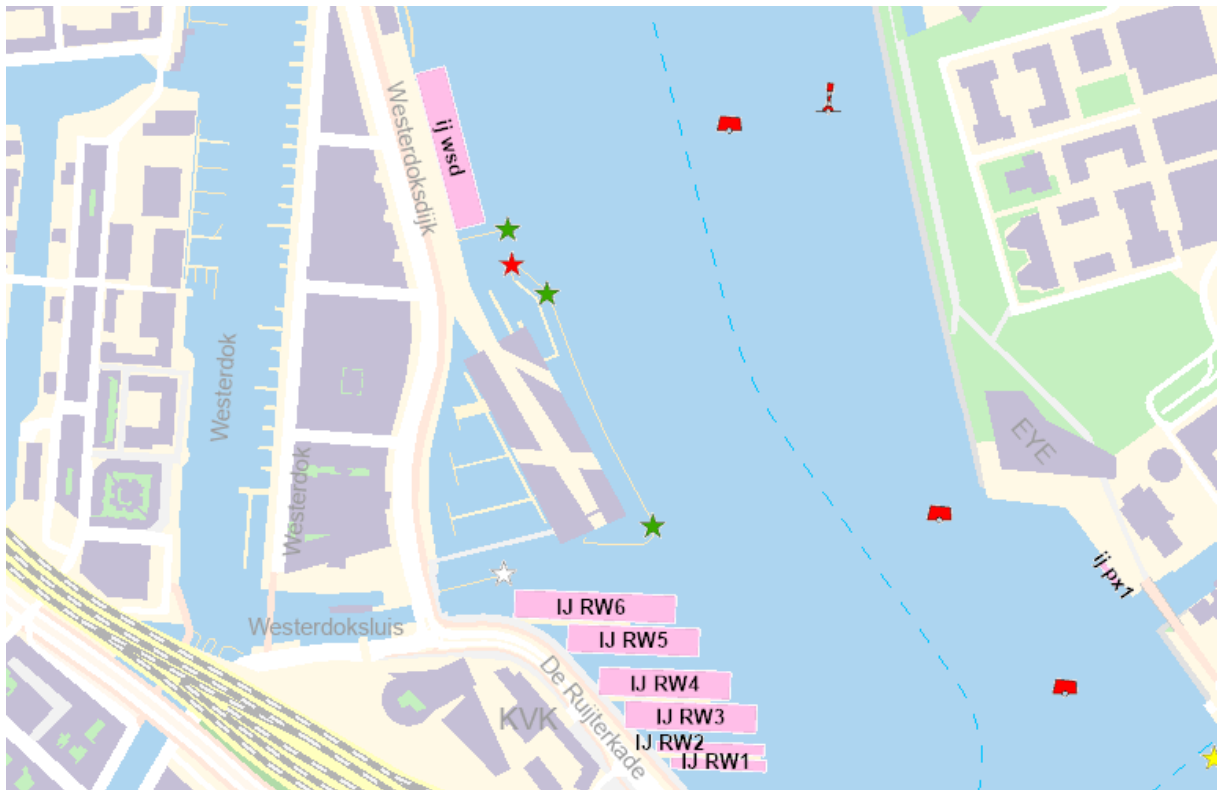
Legal Remedies In accordance with the Algemene Wet Bestuursrecht (the Dutch General Administrative Law Act), you can lodge a (separate) notice of objection with the municipality concerned within six weeks after publication. The notice of objection must be addressed to: Burgemeester en Wethouders van Amsterdam, Postbus 202, 1000 AE AMSTERDAM. You can also submit an objection online. For this option you will need a DigiD (a digital personal identification); go to www.amsterdam.nl/bezwaar/jb

If you are represented by a third party, we request this third party to submit an authorization. The notice of objection shall have no suspensive force. If, pending the objection procedure, the situation requires a suspension or immediate relief, an application to grant suspension or provisional relief can be submitted to the Voorzieningenrechter van de Rechtbank Amsterdam, Sector Bestuursrecht, Parnassusweg 226, Postbus 75850, 1070 AW AMSTERDAM, if it concerns a permit issued by Amsterdam. For this procedure, court fees are due.

You can also submit the application digitally at <http://loket.rechtspraak.nl/bestuursrecht>. For this option you will need a DigiD. Please visit the above-mentioned site for more information.

Appendix 1

Map showing berths at De Ruijterkade West and Westerdoksdijk where a prohibition from using a generator, a main and/or auxiliary engine applies; IJ WSD, IJ RW1, IJ RW2, IJ RW3, IJ RW4, IJ RW5 and IJ RW6



Appendix 2: Explanatory notes to this Decree

Introduction

The berths shown on the map accompanying this Decree are mainly used by river cruise ships and occasionally by a mega yacht by means of a reservation made long in advance. To reduce any nuisance and inconvenience from noise and air emissions from energy carriers used on board these ships, the berths concerned are equipped with high-capacity shore-based power facilities. Ships must connect to the shore-based power facility as an alternative to their own energy supply, thereby reducing emissions.

If the ship cannot take delivery of shore power and has no alternative (such as batteries), the ship's master has to take the following actions:

- Contact the support service number on the facility to resolve the situation.
- Directly contact the port authority by telephone as mentioned in the Decree.

An alternative berth will be sought, taking into consideration the estimated duration of the malfunction and the type of ship; if there is no suitable alternative, the ship will be allowed to remain at these berths in accordance with the applicable Generator Prohibition Decree. This exemption from the prohibition will be registered by the port authority, stating the ship's name, the berth, the time and the duration of the reservation. The exemption is valid for the ship concerned for the maximum duration of the berth reservation or for as long as the malfunction lasts.